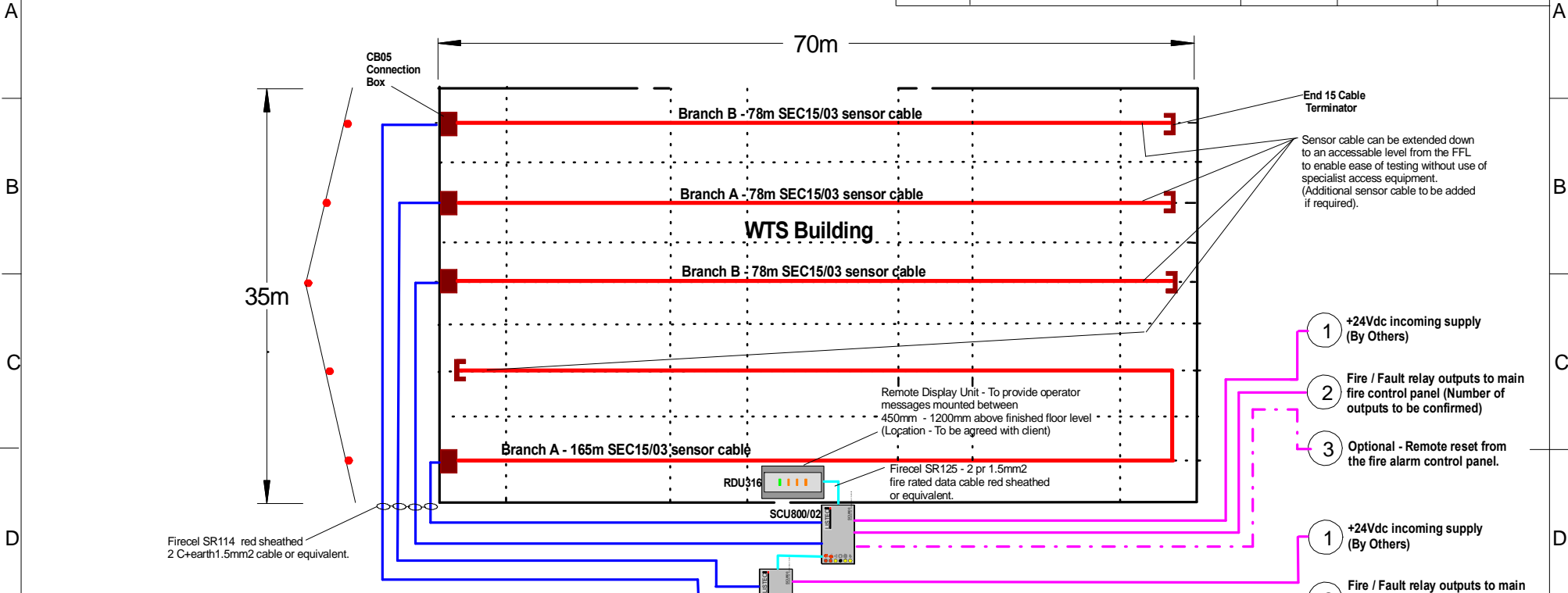


Rev. No:	Revision :	Date:	Signature:	Checked:
0	Original Issue	29/11/16	NB	MT



End 15 Cable Terminator
 Sensor cable can be extended down to an accessible level from the FFL to enable ease of testing without use of specialist access equipment. (Additional sensor cable to be added if required).

Remote Display Unit - To provide operator messages mounted between 450mm - 1200mm above finished floor level (Location - To be agreed with client)

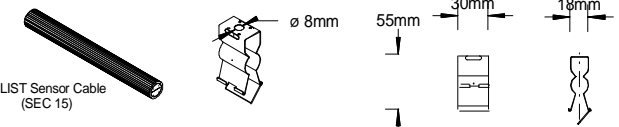
- 1 +24Vdc incoming supply (By Others)
- 2 Fire / Fault relay outputs to main fire control panel (Number of outputs to be confirmed)
- 3 Optional - Remote reset from the fire alarm control panel.

The Cable Management System (CMS) must be adhered to, i.e cables should be suitably protected in all areas upto a minimum of two metres above the finished floor level using either steel conduit, trunking or an equivalent means, suitably sized to suit the application. The installation method statement must be approved prior to any work being started.

- Notes**
- Electrical Installation to be carried out to the current IEE regulations and to BS 5839 Pt 1 2013.
 - The maximum length of heat sensor cable (Combined heat sensor cable and field wiring) to be used with the SCU 800 control unit is 2 x 250m. (i.e Branch A max 250m, Branch B max 250m)
 - Maximum No of sensors is 99 per 250m branch including field wiring.
 - Heat sensor cable to be installed in accordance with the SCU 800 Installation Manual Ref : 60T280 -01
 - The SCU 800 requires 19Vdc -29Vdc (120mA) which should be supplied from a separate power supply unit.
 - Recommended cable type for the installation is Firecel SR114 range of cables.
 - The SEC15 sensor cable will be supported where possible using the mounting clips as shown in detail A above.
 - The minimum bending radius for the SEC 15 heat sensor cable is 250mm.
 - Cable supports for the heat sensor cable are recommended at 750mm intervals. (Depending on the application the interval of the cable supports may have to be increased)
 - The measuring range of the heat sensor cable is -40 deg.C to +85 deg.C with a resolution of 0.1deg.
 - Maximum number of outputs from the SCU 800 control unit is 16 of single pole voltage free relays (16 Fire - programmable) operating on alarm conditions and 1 x Common Fault. (Optional) Rating of each relay contact is rated at 24Vdc 250mA Max (R).
 - Final fire zone allocation details to be confirmed by an authority having jurisdiction/ Fire risk assessment carried out by the landlord.
 - All electrical installation by others.
 - SEC15/03 - Heat sensor cable with 3m sensor spacing.
 - During the installation the sensor cable measuring points and the measuring point imprints should be further identified with additional markers to aid commissioning and future service and maintenance.
 - Maximum length for wiring the RDU316 remote display unit to the SCU800's is 1000m

SCU800 control unit mounted between 450mm - 1200mm above finished floor level. (Location: Local to the protected area)

DETAIL A
 LIST Sensor Cable SEC 15 Mounting Device MDC (Steel)
 (Note - Drilling of the steel structure must not be allowed, suitable "knock on fixings" must first be installed prior to utilising the MDC device).



Height - Apex - Approx. 12m
 Eaves - Approx. 9m

Designed by: N.Billingham	Checked by: M. Turner	Date Checked: 29th Nov. 2016	Filename: AWTS 001	Drawing No: 001Q	Rev : 0
Cables Britain Ltd Unit 6, Waterfall Lane Trading Estate Warley, West Midlands B64 6PU Tel: 0121 508 6890 Fax: 0121 508 6891			Proposed LISTEC Heat Sensor Fire Detection Layout for RFD Mansfield, Welshcroft Close Kirby-In-Ashfield, Notts		
				Date: 29th Nov 2016	Scale: NTS